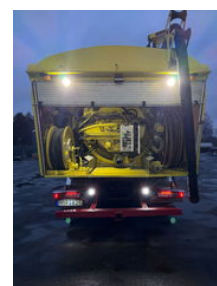




Volvo FM 380 6x2*4, Vacuum / High-pressure truck, 16m3, 2008

General features

Brand	Volvo
Model	FM 380
Subcategory	Vacuum truck
Odometer reading	225.500km
Date of first registration	23-01-2008
Color	Yellow
Condition	Used
General condition	Good
Fuel	Diesel
Emission class	Euro 5



Characteristics

Cabin

No

Volvo FM 380 6x2*4, Vacuum / High-pressure truck, 16m3, 2008

Technical specifications

Number of axes	3
Axis configuration	6x2
Transmission	Semi-automatic
Engine output	286kw

Description

Volvo FM380, 6X2*4, 16m3 Slurry & Sewage Truck with Crane, FR: 2008 More info: Engine: 380hp Gearbox: i-Shift Suspension type: Leaf-Air Odometer reading: 22,550 miles Wheelbase: 4300mm Environmental class: Euro 5 First registration: 23-01-2008 Manufactured: 2007 Electric windows and mirrors Air conditioning, Rear camera Webasto (cab heater) and Heater in pump cabinet, Engine heater No warnings at all! Last serviced at 22,250 miles (08-10-2025) Last inspected at 21,870 miles (02-04-2025) Tachograph new inspected: 08-10-2025 The truck is in good and fully functional condition, no active errors/warnings. Bodywork: Front-wheel drive 16m3 Korp&Son, Sludge suction and high-pressure flushing unit with stainless steel tank bottom and tipper. Compartment (1) of 8m3 for water high-pressure flushing tank. Compartment (2) of 8m3 for sludge. Water pump: URACA with 1 inch high-pressure hose and 1/2 inch high-pressure hose. Vacuum pump: Moro model PM200, with 930 m3/h, pressure 0.9 bar and vacuum at -0.9 bar ... all in nice and fully functional condition!! All new serviced 10-2025 Front tires condition: 70% Rear tires condition: 70% Price: €, Stockholm, Sweden

Accessories