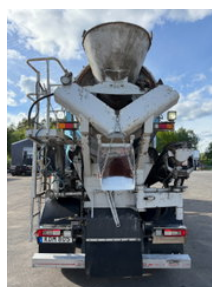




Volvo FH 500 8x4, Mixer + Hydr. slide, Euro 6, 2010

General characteristics

Brand	Volvo
Model	FH 500
Subcategory	Concrete mixer
Meter reading	463.820km
Date of first registration	01-01-2010
Colour	Red
Condition	Used
General state	Good
Fuel	Diesel
Emission class	Euro 6



Properties

Cabin

Sleeping cabin

Cylinder capacity

12.777cc

Volvo FH 500 8x4, Mixer + Hydr. slide, Euro 6, 2010

Technical specifications

Number of axes	4
Axis configuration	8x4
Transmission	Semi-automatic
Assets	375

Description

Volvo FH500, 8x4, Euro 6, 463,820km, Concrete Mixer, 2010 More info: Mileage: 463,820km Engine: 500hp Transmission: i-Shift Suspension type: Leaf/Air Model year: 2010 Environmental class: Euro 6 (converted from Euro 5) Wheelbase: 3700mm Axle config.: 8x4 (steering and liftable 4th axle) Total weight: 32,000kg Permitted load weight: 15,165 kg Chute: MSM (9m) - Remote controlled Smoke and pet free! Scheduled for inspection: 02-06-2026 Last serviced at 463,820 km (28-05-2026) Warning in the display: a sensor 4:axle left side, will be replaced. Extras: Rear viewing-camera, Refrigerator, Microwave, Alcolock, Converter... etc. Front tires condition: 60% Rear tires condition: 90%

Accessories

- Sunroof
- Heated Mirrors
- Spotlight rear
- Reversing camera
- Air conditioning
- Aluminium fuel tank
- Electrically operated windows
- Fog lights
- Sleeper cab
- Heavy duty engine brake
- Spotlights
- Xenon lighting
- Visor
- Cruise control
- Leather interior
- Central doorlocking