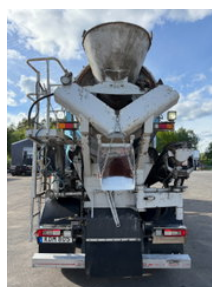




## Volvo FH 500 8x4, Mixer + Hydr. slide, Euro 6, 2010

### Algemene kenmerken

Merk	Volvo
Model	FH 500
Subcategorie	Betonmixer
Tellerstand	463.820km
Datum eerste registratie	01-01-2010
Kleur	Rood
Conditie	Gebruikt
Algemene staat	Goed
Brandstof	Diesel
Emissieklasse	Euro 6



### Eigenschappen

Cabine

Slaapcabine

---

Cilinder inhoud

12.777cc

# Volvo FH 500 8x4, Mixer + Hydr. slide, Euro 6, 2010

## Technische specificaties

Aantal assen	4
Asconfiguratie	8x4
Transmissie	Halfautomaat
Vermogen	375

## Omschrijving

Volvo FH500, 8x4, Euro 6, 463,820km, Concrete Mixer, 2010 More info: Mileage: 463,820km Engine: 500hp Transmission: i-Shift Suspension type: Leaf/Air Model year: 2010 Environmental class: Euro 6 (converted from Euro 5) Wheelbase: 3700mm Axle config.: 8x4 (steering and liftable 4th axle) Total weight: 32,000kg Permitted load weight: 15,165 kg Chute: MSM (9m) - Remote controlled Smoke and pet free! Scheduled for inspection: 02-06-2026 Last serviced at 463,820 km (28-05-2026) Warning in the display: a sensor 4:axle left side, will be replaced. Extras: Rear viewing-camera, Refrigerator, Microwave, Alcolock, Converter... etc. Front tires condition: 60% Rear tires condition: 90%

## Accessoires

- Schuifdak
- Spiegelverwarming
- Verlichting achter
- Achteruitrijcamera
- Airconditioning
- Aluminium brandstoftank
- Elektrisch bedienbare ramen
- Mistlampen
- Slaapcabine
- Versterkte motorrem
- Verstralers
- Xenon verlichting
- Zonneklep
- Cruise control
- Lederen bekleding
- Centrale vergrendeling